

# ARAPAHO DERRICK BARGE VESSEL

## EPIC HEAVY LIFT SERVICES

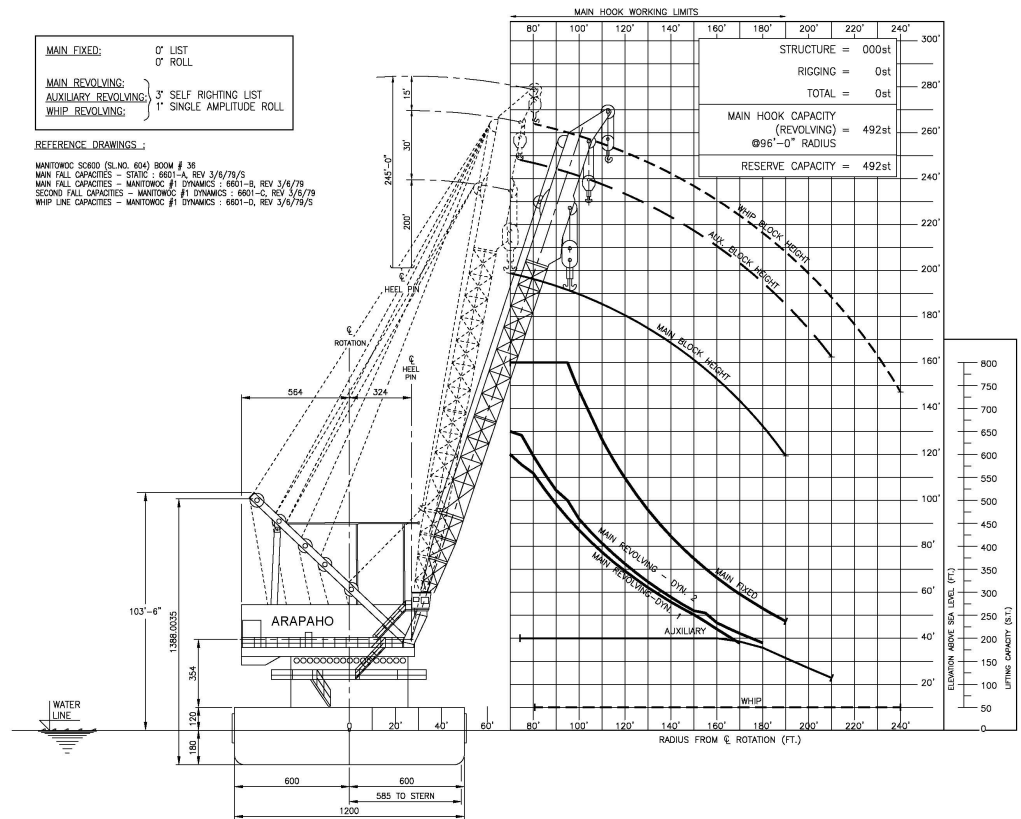
The DB Arapaho is an 800-ton (726 metric) capacity conventional derrick barge that is ideal for a variety of offshore projects. The Arapaho's experienced crew and reliable equipment contribute to successful solutions for offshore decommissioning, installation, and construction challenges.



### VESSEL SPECIFICATIONS

#### DIMENSIONS

Length (LOA)	350 feet (106.68 meters)
Width	100 feet (30.48 meters)
Depth	25 feet (7.62 meters)
Operating Draft	16 feet (4.88 meters)
Working Deck Area	16,000 square feet (1,486.45 square meters)
Classifications	USCG, ABS XA-1
Registry (Flag)	U.S.A.
<b>Helideck</b>	
Dimensions	50 x 60 feet (15.24 x 18.29 meters)
Load Capacity	19,800 pounds



#### ACCOMMODATIONS & STORAGE CAPACITY

Living Space	100-person quarters
Fuel Capacity	360,000 gallons
Fresh Water Capacity	1,000,000 gallons

#### AUXILIARY EQUIPMENT

Main Generator	(2) 750 kW, 480 volt, 3-phase, 60 HZ
Emergency Generator	(1) 250 kW, 480 volt, 3 phase, 60 HZ
Electric Compressors	(2) Electric Sulair 750 CFM

### MOORING EQUIPMENT

Anchors	(8)
Capacity	22,000 pounds
Type	Flipper Style
<b>Winches</b>	
Quantity	(4)
Type	Double Drum Skagit - DTW 150
Capacity	300,000 pounds
<b>Wire</b>	
Dimensions	1.75 inch
Length	4,500 feet

### DECK EQUIPMENT

<b>Deck Crane</b>	
Make	Manitowoc
Model	3900W/S2
Type	Crawler
<b>Boom</b>	
Length	120 foot main
Capacity	60 short tons
<b>Compressors</b>	
Diesel	(1) 750 CFM
<b>Jet Pumps</b>	
Diesel	(1) 6x6

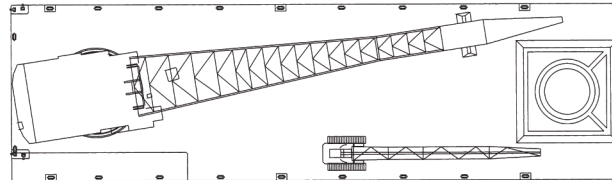
### COMMUNICATIONS

<b>Radios</b>	
Fixed VHF	(2)
Portable VHF	(8)
<b>Telephones</b>	
V-Sat	(4) lines communication/ Internet
Digital	(1) backup

### MAIN CRANE

Make	Manitowoc
Model	Seacrane 600
Type	Revolving
<b>Boom Length</b>	
Main	200 feet (61 meters)
Auxiliary	230 feet (70 meters)
Whip	245 feet (75 meters)
<b>Capacity</b>	
Main Fixed	800 short tons @ 95-foot radius (726 MT @ 29 meters radius)
Main Revolving	650 short tons @ 70-foot radius (590 MT @ 21 meters radius)
Auxiliary	200 short tons @ 180-foot radius (182 MT @ 55 meters radius)
Whip	50 short tons @ 220-foot radius (45 MT @ 67 meters radius)

### Derrick Barge Plan



### DERRICK BARGE PROFILE

