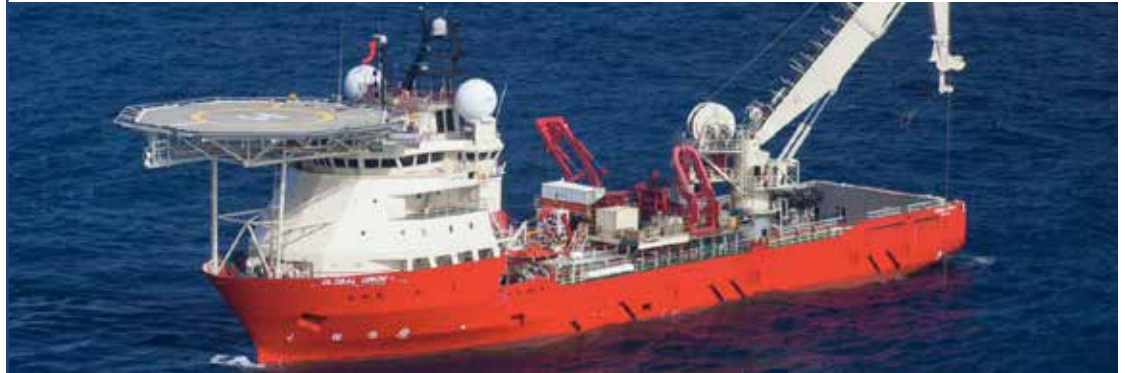


# DP2 MULTI SERVICE VESSEL (MSV) GLOBAL ORION



The ship is equipped with a fully integrated diesel electric propulsion system and prepared for worldwide operation. Global Orion has a clear deck area of 601 m<sup>2</sup>, a 6 m x 5.25 m moonpool, is outfitted with EPIC's DNV classable and IMCA compliant.

## VESSEL SPECIFICATIONS

### Diving, Inspection, Construction, and ROV Support

The vessel has a length of 91 m (298 ft), beam of 19.7 m (65 ft), a 165 s. ton (150 Te) AHC crane, accommodations for 98 people, and a Sikorsky S-92 class helideck.

HOSS-001 1,000 ft saturation diving system, and can be equipped with ROV support. Below deck, the vessel is arranged for a wide array of liquid cargo categories.

## SPECIFICATIONS

Length (overall)	298.6 ft (91 m)
Length between perpendicular	270.3 ft (82.40 m)
Breadth Moulded	64.6 ft (19.7 m)
Depth Main Deck	24.4 ft (7.45 m)
Draft Midship (max)	20.7 ft (6.3 m)
Type	MT6016
Design	Marin Teknikk
Classification	ABS classed DP2, USCG all oceans
Year Built	2002
Registry (flag)	Vanuatu
Operating Draft (min/max)	14.1 ft (4.3 m)/20.7 ft (6.3 m)
Tonnage (gross/net)	3908/1311
Max Deck Load	5 t/m <sup>2</sup>
Free Deck Area	601 m <sup>2</sup>
Moon Pool	19.6 ft (6 m) x 17.2 ft (5.25 m)
Accommodations	98 people
Hospital Beds	2
Transit Speed (econ/max approx.)	11/14 kts
Helicopter Max rating	Sikorsky S-92
Helicopter Refueling Capacity	N/A
Helideck Dimensions	69 ft (21 m) x 69 ft (21 m)

## MACHINERY

Main Engines	(5) Caterpillar 9500 kW
Main Generators	(5) Siemens, 9100 kW
EM/Harbour	370 kW/1800 RPM
Water Makers	9,275 gal (35m <sup>3</sup> /day)

## BUNKER CAPACITY

Fuel	409,730 gal (1551m <sup>3</sup> )
Fresh Water	254,398 gal (963m <sup>3</sup> )

## DYNAMIC POSITIONING

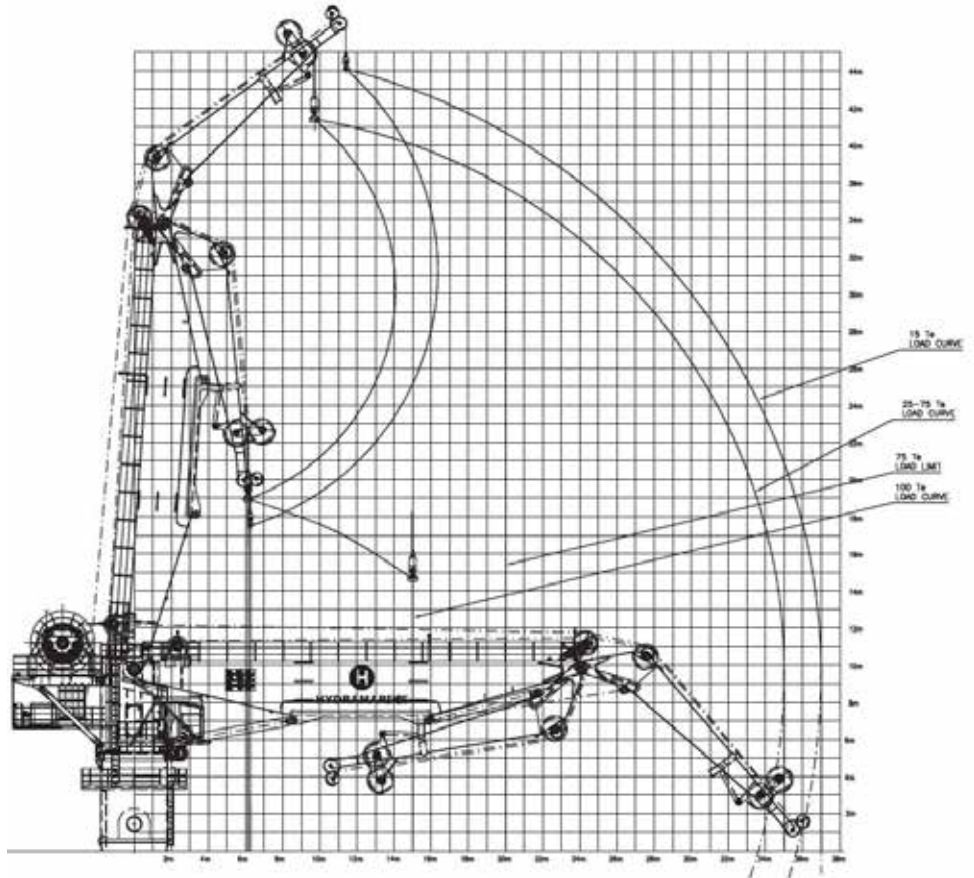
DP Class	2
DP System	Kongsberg Maritime AS, SDP21
Main Prop Thrusters	(2) 2200 kW Aquamaster azimuth
Retractable Thruster	Rolls Royce, UL 1201, 883 kW
Tunnel Thrusters	(2) Rolls Royce, TT 2200 DPN, 883 kW

## MOORING EQUIPMENT

No. of Anchors; WT	2
Make, Type	SPEK

## MAIN CRANE

Derrick Make/Model	Hydramarine
Make/Type	AHC Knuckle Boom
<b>Boom Length</b>	
Main	75 ft (23 m)
Knuckle	33 ft (10 m)
<b>Capacity</b>	
Main Revolving to 1500 m	165 s. Tons (150 tonnes)
Whip	16.5 s. Tons (15 tonnes)
Heave Compensated	Active & Passive



## AUXILIARY CRANE

Make/Model/Type	(1) Hydramarine
Boom Length	49 ft (15 m)
Capacity	27.5 s. Tons (25 tonnes)

## Communication Systems

(1) SSB-Furuno FS 150W, (1) Immarasat Mini M, V-SAT, VHF, UHF, Harris Caprock network communications, Phone/Fax/Email.

## Navigation

Electronic Chart System, Fugro GPS, Echo Sounder, ECDIS, Voyage Data Recorder

## Diving Systems

The *HOSS-001* is a DNV classable and IMCA compliant 12-man, 1,000 ft rated saturation diving system with a Hyperbaric Rescue

