

DP3 CONSTRUCTION VESSEL NOR GOLIATH

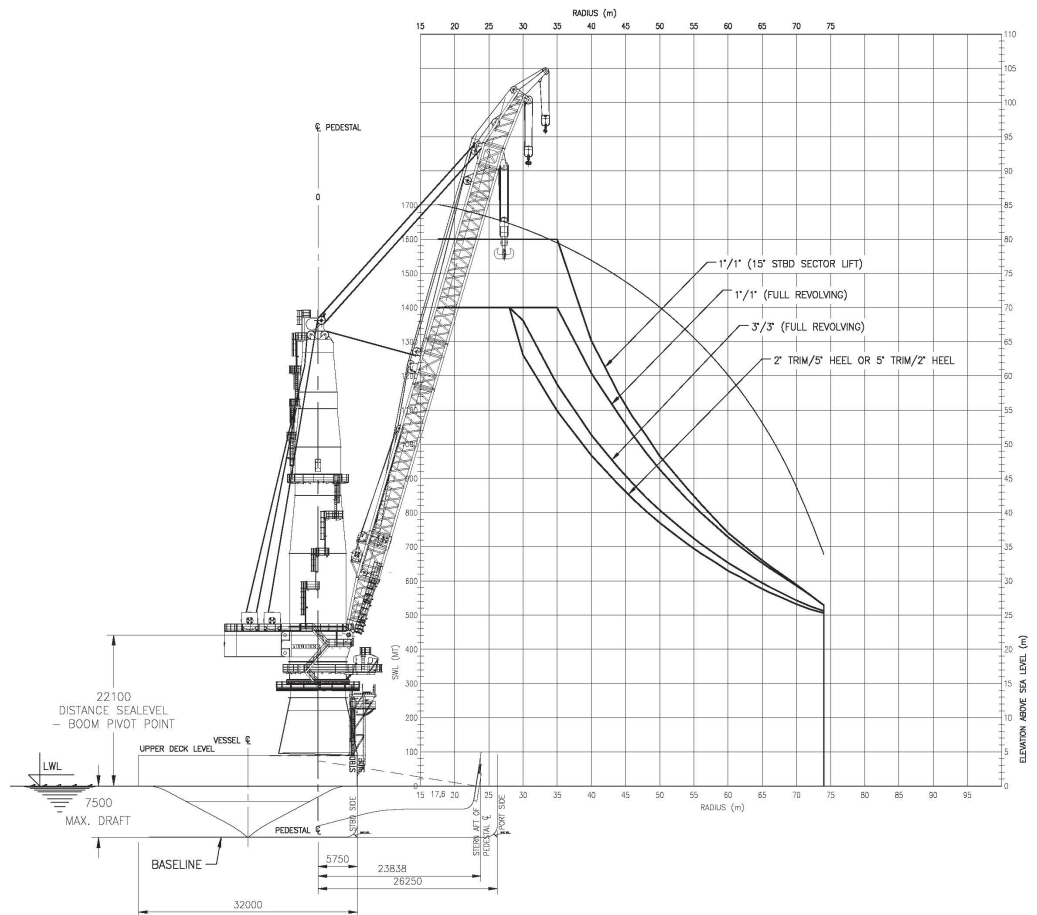
Outfitted with material barges, survey equipment, air and saturation diving systems, x-ray, NDT, and hammer equipment (as required on project-specific bases), the Goliath is ready to support your needs.



VESSEL SPECIFICATIONS

SPECIFICATIONS

Length (overall)	590.6 ft (180.0 m)
Width	105.0 ft (32.0 m)
Draft (design/ max)	24.6 ft (7.5 m)
Draft (mean)	21.3 ft (6.5 m)
Draft (max with retractable thrusters extended)	38.0 ft (11.6 m)
Class	ABS + A1 + (E) + AMS + ACCU + ICE CO + DP3 +HELIDECK + ES + FiFi 2
Registered Tonnage (Gross)	25,812
Registered Tonnage (Net)	7,743
Registry (flag)	Marshall Islands
Year Built	2009
Shipbuilder	Drydocks World Pertama
Accommodations	296 people
Helideck Dimensions	75.5 ft (23.0 m) diameter designed for Sikorsky S61N



DP SYSTEM

- Kongsberg K-Pos dual redundant main operating station aft bridge, simplex back-up operating station on forward bridge
- 2 x HiPAP acoustic position reference system, with 2 x 500 mm transducers
- 3 x Differential GPS position reference systems
- 2 x Bandak Mk 15B taut wire position reference systems
- 2 x Fanbeam short-range laser position reference systems

DP3 CONSTRUCTION VESSEL NOR GOLIATH

MAIN CRANE

Make	Liebherr
Model	MTC 78000-1400 (1600) Litronic

Capacity

Main Hook	1,600 mt / 80 m hook height
Auxiliary Hook 1	200 mt / 94 m hook height
Auxiliary Hook 2	50 mt / 98 m hook height

2 x Auxiliary Cranes

Make	Liebherr
Main Hook	70 mt / 53 m hook height
Auxiliary Hook	15 mt / 61 m hook height

SPEED, CONSUMPTION, AND ENDURANCE

General Service Speed	12 knt –90% MCR
Consumption in Transit	39 mt/day
Consumption onDP	15 mt/day
Consumption alongside	5 mt/day
Endurance	80days offshore

CARGO AND DECK SPACE

Flush Deck Cargo Space	4,200 m2
Deck Loading	10 mt/m2 and 5 mt/m2

The Goliath has a length of 591 ft (180 m), beam of 105 ft (32 m), a 1,600 mt Liebherr main crane, 2 x 70 mt auxiliary cranes, and accommodations for 296 people.

THRUSTERS

Aft	3 azimuth thrusters, each of 3,333 kW
Fwd	2 x 2,400 kW azimuth retractable thrusters plus 2 x tunnel thrusters, each of 1,355
Total Thruster Power	17,509 kW

