

# QUETZAL

## 8-POINT MOORING PIPE-LAY BARGE

The LB Quetzal was built in 2009, she has a length of 366 ft. (111.56m), width of 104 ft. (31.7m), 8-point mooring system, 60" pipe-lay capability, 500MT Liebherr crane, 1,200 m<sup>2</sup> clear deck area, and accommodations for 300 people.



### VESSEL SPECIFICATIONS

#### SPECIFICATIONS

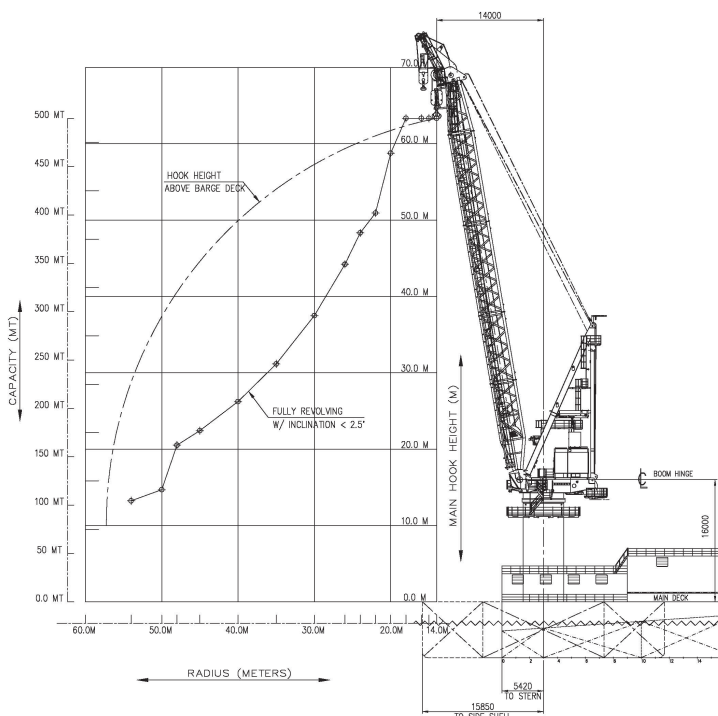
Length	366 ft. (111.56m)
Width	104 ft. (31.7)
Draft	14.8 ft. (7.31)
Class	ABS
Registered Tonnage (Gross)	12,532 T
Registered Tonnage (Net)	3,759 T
Registry (flag)	Mexico
Year Built	2009
Helideck	For S-92 Helicopter
Ship Builder	Nantong Tongde Shipbuilding & Repairing CO.
Helideck Dimensions	69 ft (21 m) x 69 ft (21 m)

#### ANCHOR MOORING SYSTEM

Anchors	8 nos. x 12 T Delta Flipper
Anchor Winches	8 Single Drum hydraulic, 70MT x 14m/min ( First Layer)
Mooring lines	8 nos. x 52mm Ø x 1,400m
Pendant Buoys	10 nos.

#### PIPE-LAY CAPABILITIES

Automatic Tensioners	2 x 60MT nominal Pull/SAS
A&R Winch	1 x 120MT
Welding Stations	5 x Manual or Automatic
NDT	1 X Radiography or UT
1 x Set	Coating Preparation
Welding Machines	16 x 400 Amp
Stinger	1 x 26m x 3m equipped with U & V Shape Rollers
Roller Ramp	13 Sets of V Shape Rubber Coated Rollers
Davits	6 x 30 T



### GMDSS & NAVIGATION EQUIPMENT

GMDSS	1 x FURUNO FS-1570
Immarsat	1 x FURUNO model FELCOM-16 (LRTI)
VHF Radio	3 x McMurdo model R2
Navtex Receiver	1 x FURUNO NX 700B
SART	2 x MC MURDO S4 9 GHz
EPIRB	1 x MC MURDO E5 SMARTFIND 406 MHz
AIS	1 x FURUNO model FA-150
Portable VHF Radio	6 x ICOM model IC-A210#01
VHF Air Band Transceiver	1 x ICOM IC-A210#01
Marine Radar	1 x FURUNO 1932 MK2
Echo Sounder	1 x FCV-585
GPS	1 x FURUNO GP37
Colour Video Sounder	1 x FURUNO model FCV-585
Satellite Compass	1 x model DAIKO SR-150 PPK

### FIRE FIGHTING

Fire Pump	1 x 150m <sup>3</sup> /hr. @ 110m head; DESMI
Emergency Fire Pump	1 x 50 m <sup>3</sup> /hr. @ 80m head; DESMI
Life Raft	24 x 25 men SOLAS 74/78 Compliant
Rescue Boat	1 x 6 persons SOLAS approved c/w davit
Water Sprinkler System	Main Pump (84m <sup>3</sup> /hr. capacity 37kW, 65m head, 1,450rpm); Jockey Pump (3 m <sup>3</sup> /hr. capacity, 1.5kW, 2,896rpm)

### CRANE

BOS-Type Offshore Crane	500MT @ 18m radius, 70T @ 54m Liebherr diesel-hydraulic rope luffing, Model BOS 14000-500D Litronic
Main Hook Rating	500MT @ min. boom radius
Auxiliary Hook Rating	50MT @ min boom radius

### CARGO AND DECK SPACE

Clear Deck Area	1,200 m <sup>2</sup>
Deck Loading	12.5MT/m <sup>2</sup>
Deck Sheathing Area	1,100 m <sup>2</sup>

### POWER SUPPLY

Main Generators	Caterpillar Engine 6 units 3508B, 800kW, 415V/3ph/50Hz @ 1,500rpm
-----------------	---

### AUXILIARY EQUIPMENT

Compressors	Quincy QSI 1000-1014 @ 100 PSIG Quincy QSI 600-630 CFM @ 100 PSIG
-------------	--

### SERVICE PUMPS

Centrifugal Ballast	2 x 500m <sup>3</sup> /hr. @ 45m head discharge Rate
General Service	1 x 100 m <sup>3</sup> / hr. @ 15m head
Deck Sheathing Area	1,100 m <sup>2</sup>

